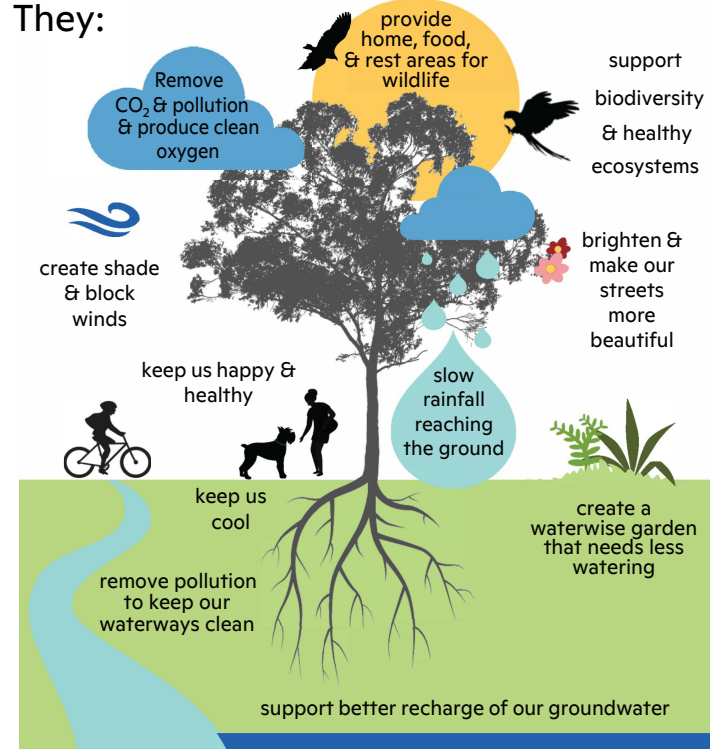


# Why do we need trees?

Trees can bring many benefits to area.

They:



"The best time to plant a tree was 20 years ago. **The second best time is now.**" - *Chinese proverb*

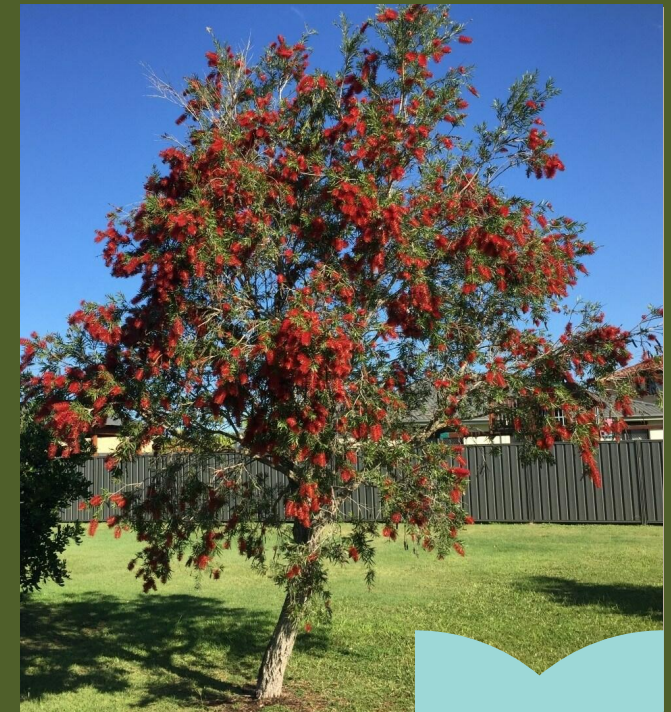
Find out more about trees in Mandurah:



[mandurah.wa.gov.au](http://mandurah.wa.gov.au)  
9550 3777  
[council@mandurah.wa.gov.au](mailto:council@mandurah.wa.gov.au)

# Adopt a Tree

## How to care for your street tree





# Caring for your new street tree

Planting, pruning, maintenance, and replacement of street trees is the responsibility of the City, however, additional care by residents during the tree's establishment period (around 2 years) is greatly appreciated.

To help your new tree thrive, please remember to do the following:

## 1. Water your tree regularly

Your new street tree will need extra watering when first planted and in the summer months.

Water with 2-3 buckets per week (total 50L) or drench the roots for 60-80 seconds.



## 2. Apply wetting agent twice a year

In spring and late summer sprinkle a wetting agent around the base of the tree.



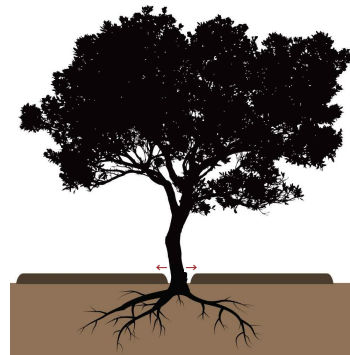
## 3. Keep the grass and weeds away

Grass and weeds at the base will compete for water and nutrients so it is best to remove them. Manually remove weeds rather than using weedkiller as these chemicals reduce soil quality.



## 4. Protect your tree's trunk

Damage to a young tree's trunk will impact growth. Your tree will come with a guard to protect it from damage. You can top up the mulch on the outside of the guard to 7-10cm in height. Remember to keep the mulch away from the trunk.



## 5. Avoid damage to your tree roots

Don't disturb the soil under the tree as this will damage the roots. Avoid parking or storing anything heavy at the base to prevent compacting the soil and reducing how much water can filter in.

## 6. Straighten stakes and check tree ties

If needed, re-stake to support your tree until it is established. Check and loosen tree ties as it grows.

## 7. Pay attention to the leaf colour, bark and shape of the tree

Call the City if your tree looks sick or damaged.



## 8. Report vandalism of your tree to the City.

## 9. Share with friends and family

If you are happy with your tree, spread the word to your family and friends to request their own street tree.

## Request a tree:



Requesting a street tree is free!

The City takes care of the planting and care.

### All you have to do is:

- enjoy all the benefits of having trees on your street verge
- take on a little extra care to help your tree thrive

