

# Waste & Recycling Guide 2023/24



**Landfill is the last resort.**

Find your local solutions at  
[wastesorted.wa.gov.au](https://wastesorted.wa.gov.au)



# Be a GREAT Sort!

Landfill is the last resort.

**GIFT STUFF**  
to charity,  
swap or sell.

**RECYCLE THESE 5:**  
plastic, glass, cans,  
paper and cardboard.

**EARTH-CYCLE**  
food scraps  
into compost.

**AVOID EXCESS  
PACKAGING**  
and disposables.

**TAKE SPECIAL  
WASTE**  
to drop-offs.



Welcome to the City of Mandurah's Waste and Recycling Guide for 2023/24. This is a great resource for residents with information on bin collections, verge collections, recycling and managing waste in a more sustainable way. Additional information is available on the City's website including details on:

- Waste to Energy
- A-Z disposal guide
- Waste Management Centre
- Your residential waste collection schedules by using the 'NearMe' tool
- Problematic waste



**Visit our website**

# Residential Bin Collections

Keep at least  
**0.5m clear**  
between bins

Keep at least  
**1m clear**  
from trees and not  
under tree canopy



Keep at least  
**1m clear**  
of fences, cars,  
letterboxes etc.



Place bins out by 6am  
on your collection day



Maximum weight  
of each bin is 70kg



Do not park in front of bins  
and keep laneways clear

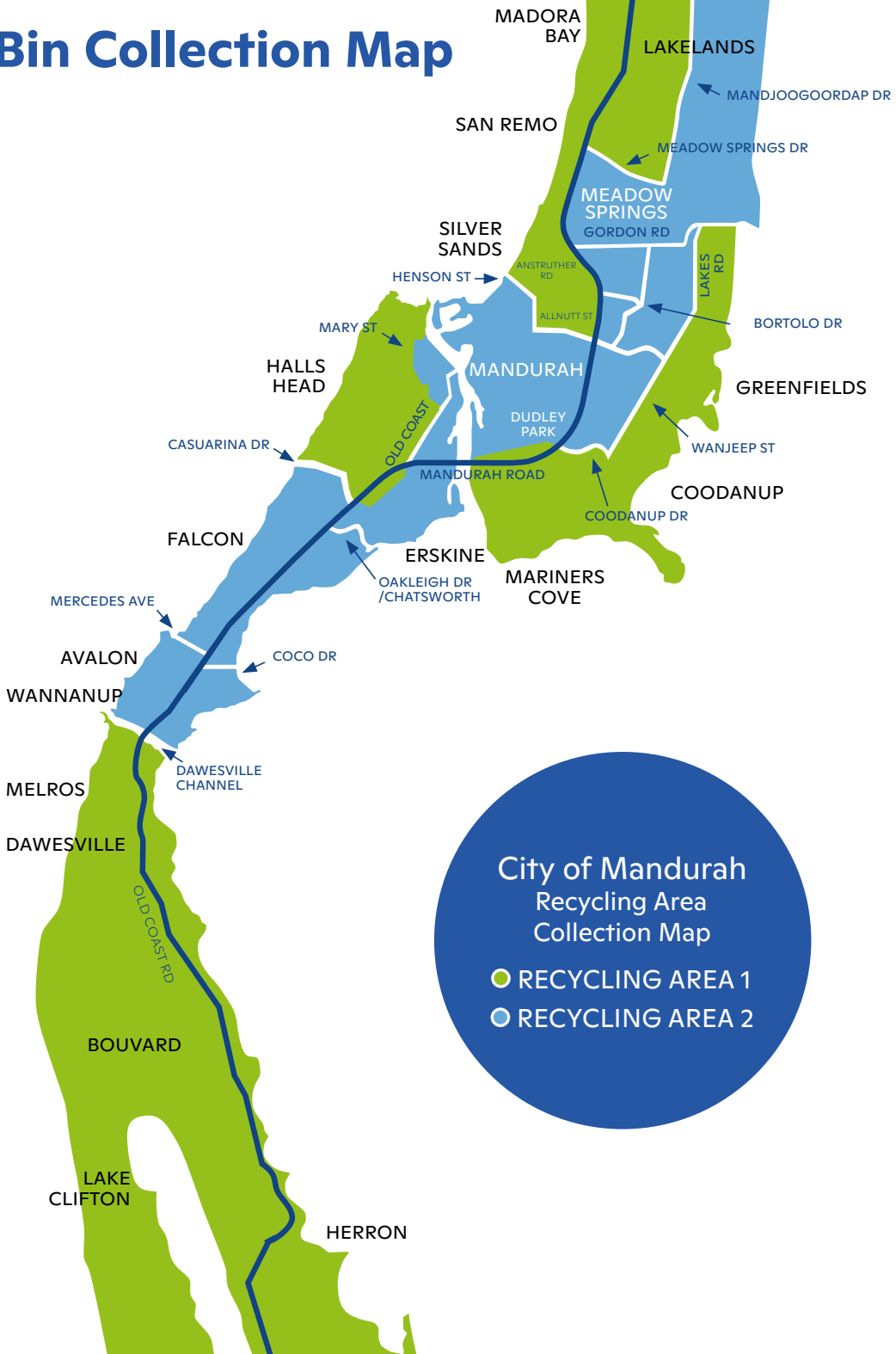
## Handy tips:

- Bin shall not remain on the verge for more than 24hrs
- Place bins on your kerb with wheels facing your house
- Return your bin to your property as soon as possible once they are empty
- Store your bins in a shaded/protected area
- Ensure the lid of your bin is fully closed at all times
- Clean your bins regularly

## Damaged, lost or stolen bins?

Contact the Waste Alliance Customer Service Centre on 9587 4660.

# Bin Collection Map



# Bin Collection Schedule

## July 2023

S	M	T	W	T	F	S
						1
2	3	4	5	6	7	8
9	10	11	12	13	14	15
16	17	18	19	20	21	22
23	24	25	26	27	28	29
30	31					

## August 2023

S	M	T	W	T	F	S
			1	2	3	4
5	6	7	8	9	10	11
12	13	14	15	16	17	18
19	20	21	22	23	24	25
26	27	28	29	30	31	

## September 2023

S	M	T	W	T	F	S
					1	2
3	4	5	6	7	8	9
10	11	12	13	14	15	16
17	18	19	20	21	22	23
24	25	26	27	28	29	30

## October 2023

S	M	T	W	T	F	S
1	2	3	4	5	6	7
8	9	10	11	12	13	14
15	16	17	18	19	20	21
22	23	24	25	26	27	28
29	30	31				

## November 2023

S	M	T	W	T	F	S
			1	2	3	4
5	6	7	8	9	10	11
12	13	14	15	16	17	18
19	20	21	22	23	24	25
26	27	28	29	30		

## December 2023

S	M	T	W	T	F	S
					1	2
3	4	5	6	7	8	9
10	11	12	13	14	15	16
17	18	19	20	21	22	23
24	25	26	27	28	29	30
31						

## January 2024

S	M	T	W	T	F	S
	1	2	3	4	5	6
7	8	9	10	11	12	13
14	15	16	17	18	19	20
21	22	23	24	25	26	27
28	29	30	31			

## February 2024

S	M	T	W	T	F	S
			1	2	3	
4	5	6	7	8	9	10
11	12	13	14	15	16	17
18	19	20	21	22	23	24
25	26	27	28	29		

## March 2024

S	M	T	W	T	F	S
					1	2
3	4	5	6	7	8	9
10	11	12	13	14	15	16
17	18	19	20	21	22	23
24	25	26	27	28	29	30
31						

## April 2024

S	M	T	W	T	F	S
	1	2	3	4	5	6
7	8	9	10	11	12	13
14	15	16	17	18	19	20
21	22	23	24	25	26	27
28	29	30				

## May 2024

S	M	T	W	T	F	S
			1	2	3	4
5	6	7	8	9	10	11
12	13	14	15	16	17	18
19	20	21	22	23	24	25
26	27	28	29	30	31	

## June 2024

S	M	T	W	T	F	S
						1
2	3	4	5	6	7	8
9	10	11	12	13	14	15
16	17	18	19	20	21	22
23	24	25	26	27	28	29
30						



Recycling Area 1



Recycling Area 2



Public Holiday

## Find Your Bin Day Using the Near Me Tool

Enter your address to find information on when waste collections and verge collections are happening in your area.

Access the near me tool at [mandurah.wa.gov.au/nearme](https://mandurah.wa.gov.au/nearme)

# Recycling bin

Collected fortnightly

Recycling is simple: it's only these 5 things...



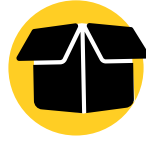
Cans



Paper



Plastic bottles  
and containers



Cardboard



Glass jars  
and bottles

Cardboard flattened,  
and containers rinsed,  
empty, loose with  
lids off.



## NOT FOR THE RECYCLING BIN



Clothing or textiles



Bagged recyclables



Food or garden  
organics



Nappies



Batteries



Soft plastics



Silver-lined products  
(e.g. juice/milk cartons)

# General waste bin

Collected weekly



Damaged clothing



Nappies



Polystyrene



Coffee cups



Food scraps



Used paper towels and tissues



Garden organics



Soft plastics



Food-soiled cardboard

## IMPORTANT INFORMATION

These dangerous items do not belong in any bin.



Batteries



Electronic waste



Fluorescent lights



Paint

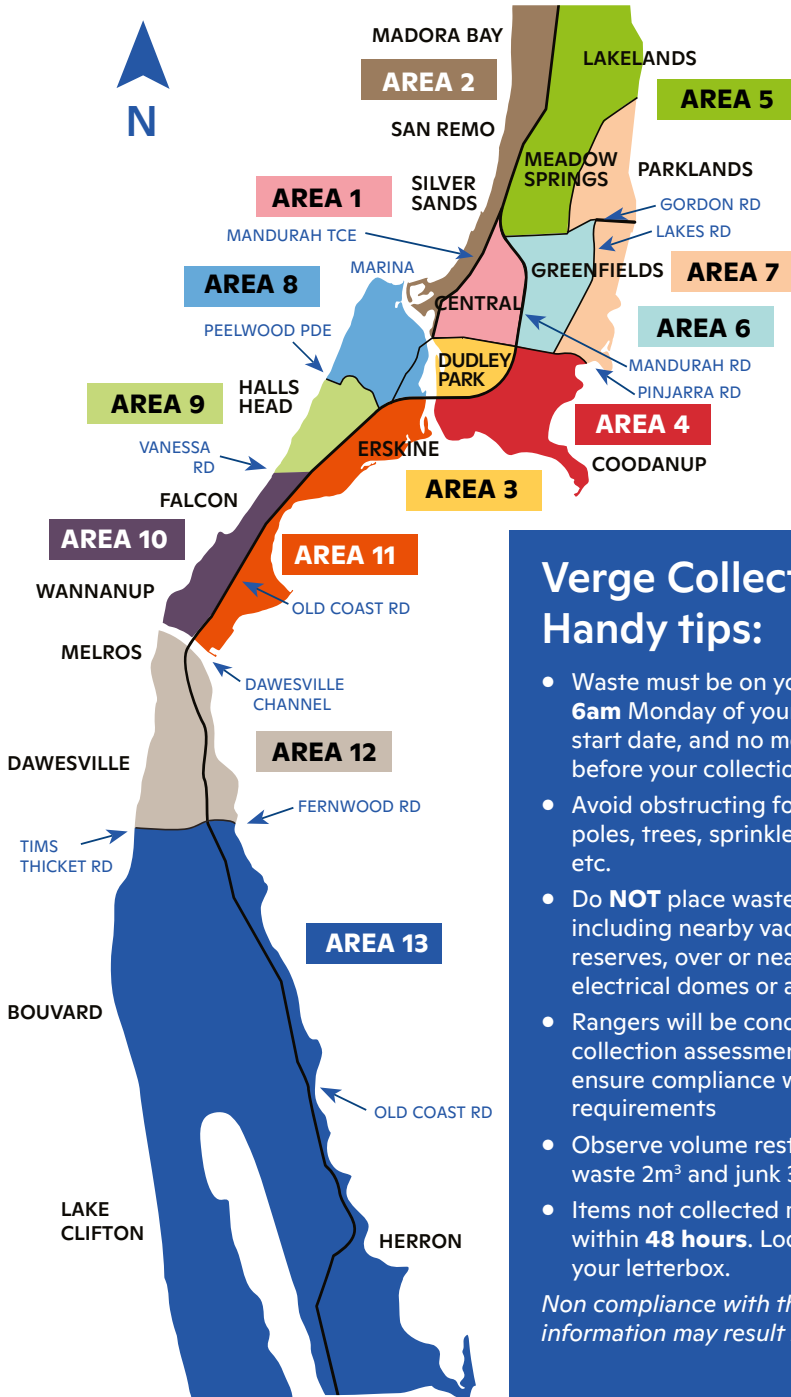


Oil

Take these items to our Waste Management Centre.



# Verge Collection Map



## Verge Collection Handy tips:

- Waste must be on your front verge by **6am** Monday of your collection area start date, and no more than **7 days** before your collection week
- Avoid obstructing footpaths, light poles, trees, sprinklers, water meters etc.
- Do **NOT** place waste on other verges including nearby vacant properties/ reserves, over or near water meters, electrical domes or artificial turf
- Rangers will be conducting pre collection assessments of verges to ensure compliance with collection requirements
- Observe volume restrictions (green waste 2m<sup>3</sup> and junk 3m<sup>3</sup>)
- Items not collected must be **removed** within **48 hours**. Look for a notice in your letterbox.

*Non compliance with the above information may result in an infringement*



# Verge Collection Schedule

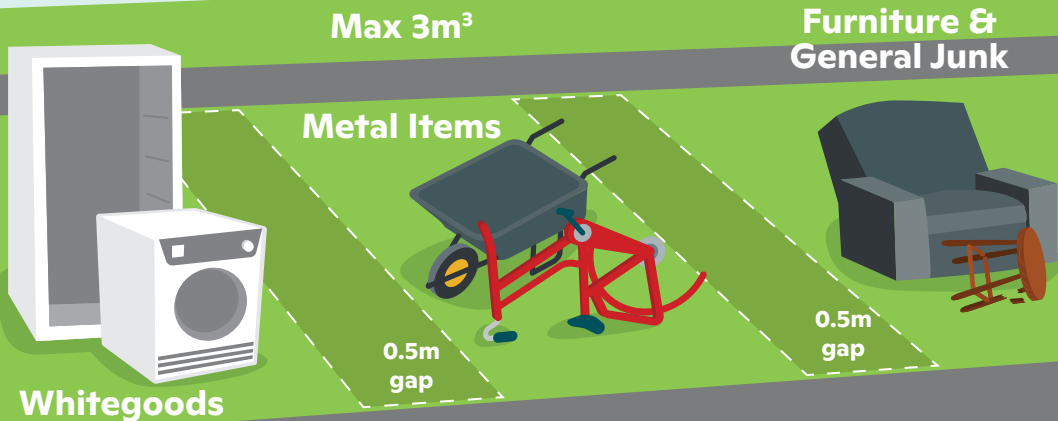
Collection Areas	Green Waste Spring	Junk and Metals	Green Waste Autumn
<b>AREA 1</b>	25 - 30 Sept 2023	5 - 10 Feb 2024	20 - 25 May 2024
<b>AREA 2</b>	2 - 7 Oct 2023	12 - 17 Feb 2024	27 May - 1 Jun 2024
<b>AREA 3</b>	9 - 14 Oct 2023	19 - 24 Feb 2024	3 - 8 Jun 2024
<b>AREA 4</b>	9 - 14 Oct 2023	26 Feb - 2 Mar 2024	3 - 8 Jun 2024
<b>AREA 5</b>	16 - 21 Oct 2023	4 - 16 Mar 2024	10 - 15 Jun 2024
<b>AREA 6</b>	23 - 28 Oct 2023	18 - 23 Mar 2024	17 - 22 Jun 2024
<b>AREA 7</b>	23 - 28 Oct 2023	25 - 30 Mar 2024	24 - 29 Jun 2024
<b>AREA 8</b>	30 Oct - 4 Nov 2023	1 - 6 Apr 2024	1 - 6 Jul 2024
<b>AREA 9</b>	30 Oct - 4 Nov 2023	8 - 13 Apr 2024	8 - 13 Jul 2024
<b>AREA 10</b>	6 - 11 Nov 2023	15 - 20 Apr 2024	15 - 20 Jul 2024
<b>AREA 11</b>	13 - 18 Nov 2023	22 - 27 Apr 2024	22 - 27 July 2024
<b>AREA 12</b>	20 - 25 Nov 2023	29 Apr - 4 May 2024	29 July - 3 Aug 2024
<b>AREA 13</b>	27 Nov - 2 Dec 2023	6 - 11 May 2024	5 - 10 Aug 2024

\* Verge collection will still be undertaken on public holidays. The verge collection will commence on the first date listed in the table above, waste **MUST** be presented on the verge before this date.

# Junk and Metals

## Verge Collection Guidelines

Sort waste into 3 separate piles to help us recycle.



### ✓ What we collect

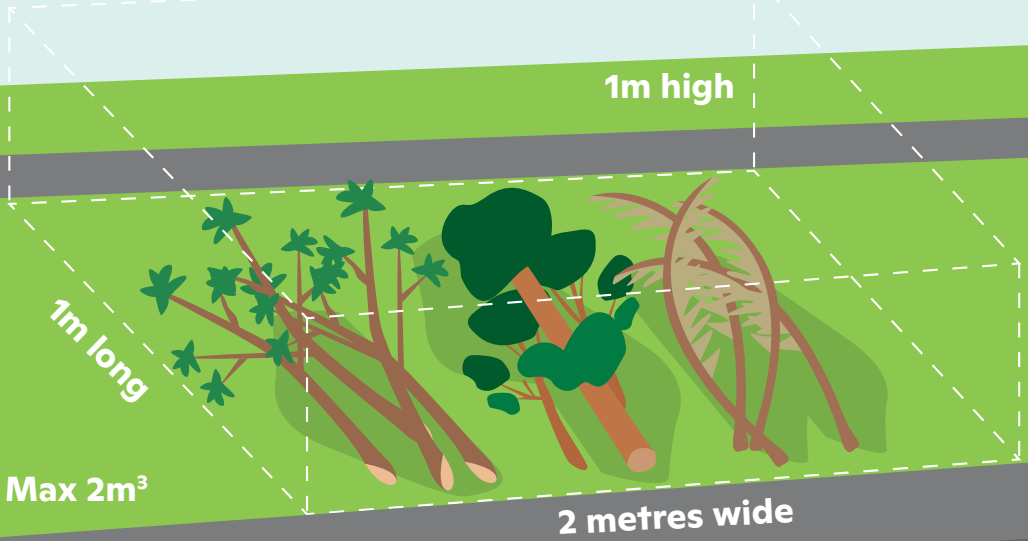
- General waste and junk
- Whitegoods (doors must be detached)
- Furniture
- Scrap metal
- Timber products

### ✗ What we don't collect

- Glass, mirrors or shower screens
- Mattresses
- Car bodies, tyres, motor vehicle parts or batteries
- Asbestos or other fibre cement products
- All building materials, bricks, paving, tiles
- Domestic rubbish, garden or food waste
- Household hazardous waste including chemicals, paints, oils, pesticides, solvents, batteries, fire extinguishers, smoke detectors or gas bottles
- Medicinal or veterinary waste
- Solar panels
- Volumes greater than 3m<sup>3</sup>
- Items over 1.8m in length

# Green Waste

## Verge Collection Guidelines



### ✓ What we collect

- Garden prunings
- Tree loppings (less than 1.5m length)
- Palm leaves
- Tree limbs, branches and small logs (less than 1.5m in length and up to 300mm in diameter)

### X What we don't collect

- General rubbish or scrap metal
- Sand or soil materials
- Weeds and root materials
- Treated timber/pine
- Pallets
- Railway sleepers
- Bags or boxes of green waste
- Volumes greater than 2m<sup>3</sup>
- Oversized green waste

# Be a GREAT Sort!

E is for Earth-Cycling food scraps and garden waste.



# Not all items can go in your kerbside bins

TAKE SPECIAL WASTE to drop-offs.

Take your hazardous items to the Mandurah Waste Management Centre.

The **Household Hazardous Waste** program accepts up to 20 kilograms or litres per material type for households at no charge.



Dispose of up to **100 litres of paint** per visit at no charge.

Cleanaway will collect up to 5L of used engine waste oil and 1 car battery each fortnight.

Please place items either on top of recycling bin or 0.5m away from bin (they need to be clearly visible to the driver).



## Recycle at Recycling Hubs

Mandurah residents can take their household batteries, household light globes, aerosol cans, coffee pods and mobile phones to their local Recycling Hub for recycling.

To find out more visit [www.mandurah.wa.gov.au/hubs](http://www.mandurah.wa.gov.au/hubs)



Batteries



Mobile Phones



CFLs



Aerosols



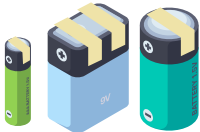
Coffee Pods

# B-Cycle: Building a planet-friendly battery lifecycle

Join the GREAT Sorts on your street who put less in their landfill bin by dropping of your used batteries to the following drop off locations: Woolworths, Aldi, Total Tools, Officeworks, and the City's Waste Management Centre.

For more comprehensive information regarding the B-Cycle Program or specific drop off locations can be found on the website at: [bcycle.com.au/drop-off](http://bcycle.com.au/drop-off)

## B-cycle batteries in 3 simple steps



**Tap the terminals of your batteries to prevent risk of fire**



**Put them in a glass container and keep out of reach of children**



**B-cycle them at your nearest drop off point & take your container home to reuse**

## Gift items to charity, swap or sell

Unwanted, reusable items such as clothes and toys in good condition can be GIFTED to charity, swapped or sold. Virtually everything has a better place to go – we just all need to be GREAT Sorts and treat landfill as the last resort.

You can find your nearest charity store or donation bin at [charitablerecycling.org.au/find-op-shop](http://charitablerecycling.org.au/find-op-shop).

**Note:** If the donation bin is full, you can go into a store, call for home collection or try another bin. Items left on the ground cannot be resold and become litter and end up in landfill.

GIFT STUFF  
to charity,  
swap or sell.



# Waste Management Centre

80 Corsican Place, Parklands  
9587 4660

**Monday - Friday 7am - 4pm | Weekends and P/H 8am - 5pm**  
(Closed Christmas Day and Good Friday)

## Drop off recyclables and other materials which do not belong in your kerbside bins.

### Separate your load

#### RECYCLING (FREE OF CHARGE)

Glass bottles, steel and aluminium cans, clean paper and cardboard.

#### HAZARDOUS WASTE (FREE OF CHARGE - LIMITS APPLY)

Gas bottles, paint, fluoro globes/tubes, batteries, motor oil, smoke detectors, electronic waste and household chemicals.

#### METAL WASTE (FREE OF CHARGE)

Scrap metal, white goods, fencing, sheet metal, car parts, bikes and lawnmowers.

#### GREEN WASTE

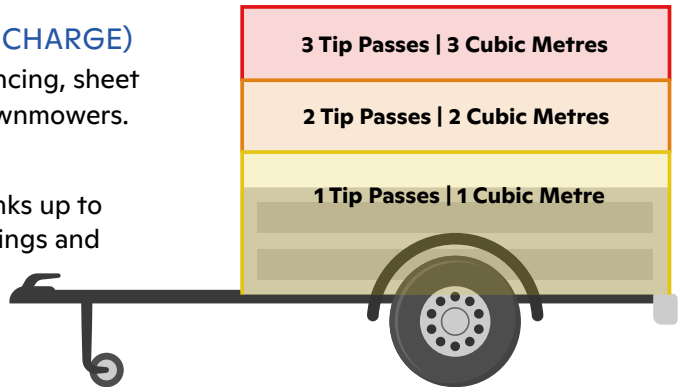
Tree and shrub prunings, trunks up to 300mm diameter, grass clippings and leaves.

#### BUILDING WASTE

Timber, brick rubble, fiber cement and sand (must be separated)

#### MIXED WASTE

Broken items that cannot be reused, recycled or composted.

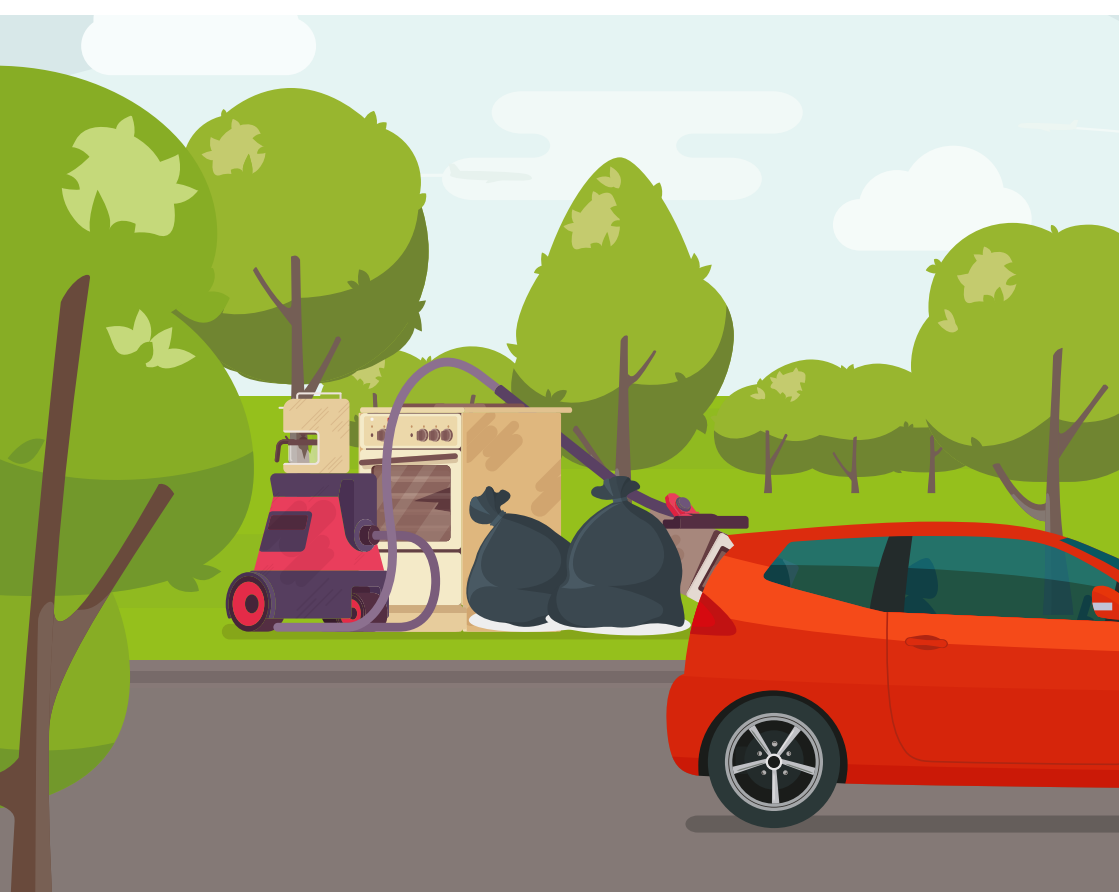


## Waste Vouchers (tip passes)

The City of Mandurah provides its ratepayers with 2 green and 2 general waste vouchers each year. The waste vouchers are attached to the bottom of the Rates Notice. Please visit the City of Mandurah website and the Rates Notice booklet for further information.

Please note that the vouchers have an expiry date.





## Adopt a spot

Adopt a spot and help keep it clean for your community  
Find out more at [kabc.wa.gov.au/get-involved/adoptaspot](http://kabc.wa.gov.au/get-involved/adoptaspot)

## Report illegal dumping

If you spot illegal dumping, please contact the City at  
[council@mandurah.wa.gov.au](mailto:council@mandurah.wa.gov.au) or call (08) 9550 3777



